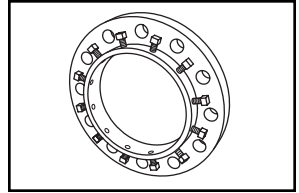


# SUBMITTAL INFORMATION

## Adapter Flange (UFA420-C-x series)

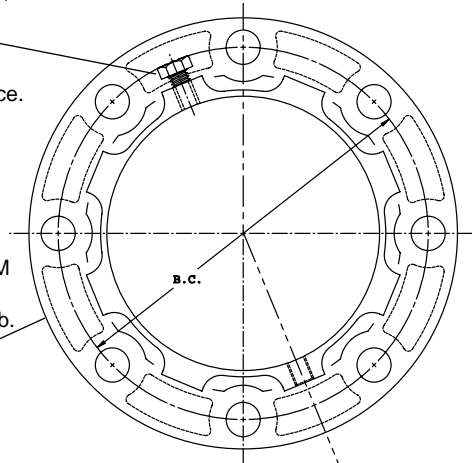


### UNI-FLANGE SERIES 420 ADAPTER FLANGE FOR DUCTILE IRON PIPE

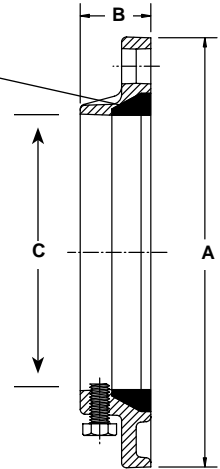
Set Screw - AISI 4140 Steel;  
Tensile 190,000 psi  
minimum. Heat treated to  
Rockwell C 35-44, and zinc  
plated for corrosion resistance.

Flange - Ductile Iron -- ASTM  
A536. Grade 65-45-12.  
Drilling to ANSI B16.1 (250 lb.  
cast iron) or ANSI B16.5  
(300 lb. steel)

Color Code: Red for ductile  
iron applications



Gasket - Standard gasket  
supplied with the Uni-  
Flange Adapter Flange  
- SBR Buna-S



NOM. PIPE SIZE	DUCTILE IRON PIPE		APPROX. WT. LBS.	PRESSURE RATING PSI	SET SCREWS		FLANGE			BOLT CIRCLE DIA.	✓ SUBMITTED ITEM(S)
	OD	CATALOG NO.			NUMBER	SIZE	OD A	THICKNESS B	APPROX. ID C		
2"	2.50	UFA420-C-2	7	400	8	1/2"x1"	6-1/2"	2-1/4"	2-5/8"	5"	
3"	3.96	UFA420-C-3	13	400	8	1/2"x1"	8-1/4"	2-7/16"	4-1/16"	6-5/8"	
4"	4.80	UFA420-C-4	21	400	8	1/2"x1"	10"	2-7/16"	4-5/16"	7-7/8"	
6"	6.90	UFA420-C-6	38	400	12	5/8"x1-1/4"	12-1/2"	2-9/16"	7"	10-5/8"	
8"	9.05	UFA420-C-8	57	400	12	5/8"x1-1/4"	15"	2-5/8"	9-3/16"	13"	
10"	11.10	UFA420-C-10	74	400	16	5/8"x1-1/4"	17-1/2"	2-5/8"	11-1/4"	15-1/4"	
12"	13.20	UFA420-C-12	104	400	16	5/8"x1-1/4"	20-1/2"	3"	13-5/16"	17-3/4"	

### FEATURES

- Restraint is provided by a set screw locking device similar to that used in mechanical joint retainer glands.
- The gasket is the standard AWWA mechanical joint gasket.
- Designed for ease of on-site installation. Eliminates bolt hole alignment problems.
- Allows for pipe deflection.
- Series 420 Adapter Flanges are not recommended for use on PVC pipe.
- Optional Uni-Torque Set Screws are available for use with Series 420 Adapter Flanges for Ductile Iron Pipe, Class 52-56. To order, add -UT to the catalog number. Example: UFA420-C-6-UT.
- Uni-Torque set screws should not be used on steel pipe thinner than Schedule 40 or ductile iron thinner than Class 52.
- EPDM gasket is available. To order, add -EPDM to end of catalog number. Example: UFA420-C-6-UT-EPDM.

The Ford Meter Box Company considers the information in this submittal form to be correct at the time of publication. Item and option availability, including specifications, are subject to change without notice. Please verify that your product information is current.



**The Ford Meter Box Company, Inc.**

P.O. Box 443, Wabash, Indiana U.S.A. 46992-0443

Phone: 260-563-3171 / Fax: 800-826-3487

Overseas Fax: 260-563-0167

<http://www.fordmeterbox.com>

07/13/06



36 Hudson Rd  
Sudbury MA 01776



800-225-4616  
[www.tisales.com](http://www.tisales.com)