

# Superior Accuracy. Zero Maintenance.

## Neptune® MACH 10® Ultrasonic Meter



The MACH 10® ultrasonic water meter features solid state ultrasonic technology including a factory-calibrated, replaceable unitized measuring element (UME) with no degradation of accuracy over time. Combined with a corrosion-resistant, lead free, high-copper alloy maincase, the MACH 10 is built to withstand demanding service conditions and deliver sustained accuracy over the life of the meter.

- Sizes 3" through 12"
- Extended low-flow range for superior leak detection
- Accuracy sustained over meter life
- Can be installed in both horizontal and vertical applications
- Open flow path design with low pressure loss
- Advanced ultrasonic technology with easily replaceable UME design
- Lead free, high-copper alloy maincase
- UL Listed and FM Approved (standard)
- Available in standard turbine and compound lay lengths
- No maintenance

## Specifications

AWWA C715 Compliant

NSF/ANSI 61 Certified

UL Listed/FM Approved  
(Standard)

Maximum Operating Water Pressure

- 175 psi

Operating Water Temperature Range

- +33°F to +122°F (+0.5°C to +50°C)

Environmental Conditions

- Operating temperature:  
+14°F to +149°F (-10°C to +65°C)
- Storage temperature:  
-40°F to +158°F (-40°C to +70°C)

Expected Battery Life

- 10 years

## Applications

- Potable water
- Fire service
- Reclaim water

## Warranty

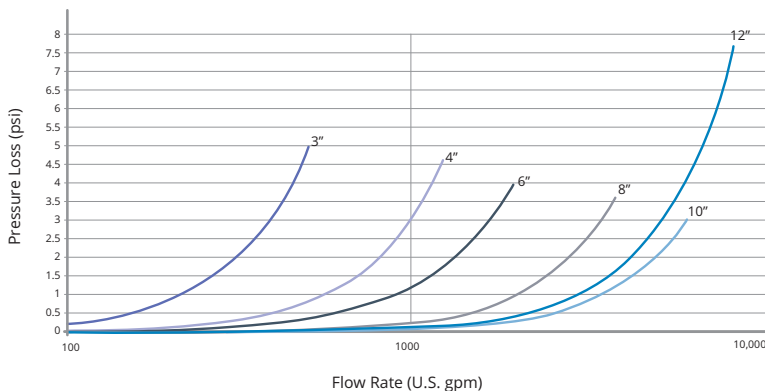
- Neptune provides a limited warranty for performance, materials, and workmanship. See warranty statement for details.

## System Compatibility

- Compatible with Neptune R900® System. Also available as MACH 10®)R900i™ for an integrated radio solution and MACH 10®)TC for Sensus Touch Coupler compatibility.

## Pressure Loss

This chart shows typical meter performance. Individual results may vary.



## Operating Characteristics

Meter Size	Extended Low Flow @ 100% Accuracy (+/- 3.0%)	Normal Operating Range @ 100% Accuracy (+/- 1.5%)	Safe Maximum Operating Capacity	
			Normal Operation (Non Fire Service)	Fire Service
3"	0.50 U.S. gpm	0.75 to 500 U.S. gpm	500 U.S. gpm	420 U.S. gpm
4"	0.75 U.S. gpm	1.5 to 1250 U.S. gpm	1250 U.S. gpm	1100 U.S. gpm
6"	1.0 U.S. gpm	2.0 to 2000 U.S. gpm	2000 U.S. gpm	1800 U.S. gpm
8"	4.0 U.S. gpm	6.0 to 4000 U.S. gpm	4000 U.S. gpm	4000 U.S. gpm
10"	6.0 U.S. gpm	10.0 to 6500 U.S. gpm	6500 U.S. gpm	6500 U.S. gpm
12"	8.0 U.S. gpm	12.0 to 8000 U.S. gpm	8000 U.S. gpm	8000 U.S. gpm

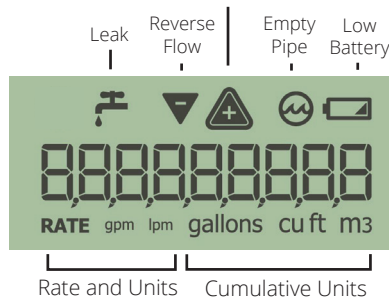
## Registration

High Resolution (8-digit reading)		3"	4"	6" - 12"
1	U.S. Gallons	✓	✓	
10	U.S. Gallons			✓
0.1	Cubic Feet	✓	✓	
1	Cubic Feet			✓
0.01	Cubic Metres	✓	✓	
0.1	Cubic Metres			✓

## LCD Display

9-digit display for extra resolution on manual reads.

Forward Flow + Warning for Excessive Flow

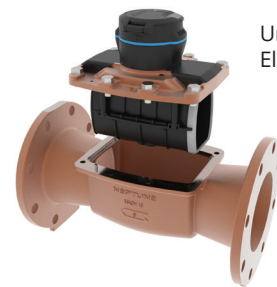


## Dimensions

Meter Size	Length	Height	Weight
3"	12"	9½"	39 lbs
	17"	9½"	42 lbs
4"	14"	11"	51 lbs
	20"	11"	57 lbs
6"	18"	12¾"	79 lbs
	24"	12¾"	91 lbs
8"	20"	15 ⅜"	160 lbs
10"	26"	17 ⅞"	264 lbs
12"	19 ⅞"	20"	292 lbs

## Available Units of Measure

Consumption	Rate
Gallons	GPM
Cubic Feet	GPM
Cubic Metres	LPM



Unitized Measuring Element (UME)

# Ti SALES

36 Hudson Rd  
Sudbury, MA 01776

800.225.4616  
www.tisales.com



Metering Systems Support  
978.261.7683