

Model 3050™ Ton Cylinder Scale Conversion Kit (available in single 3050-1 or dual 3050-2 models)

Single ton = PN: **3050-1-2000LB** or **3050-1-907KG** (or **1000KG**)

Dual ton = PN: **3050-2-4000LB** or **3050-2-1814KG** (or **2000KG**)

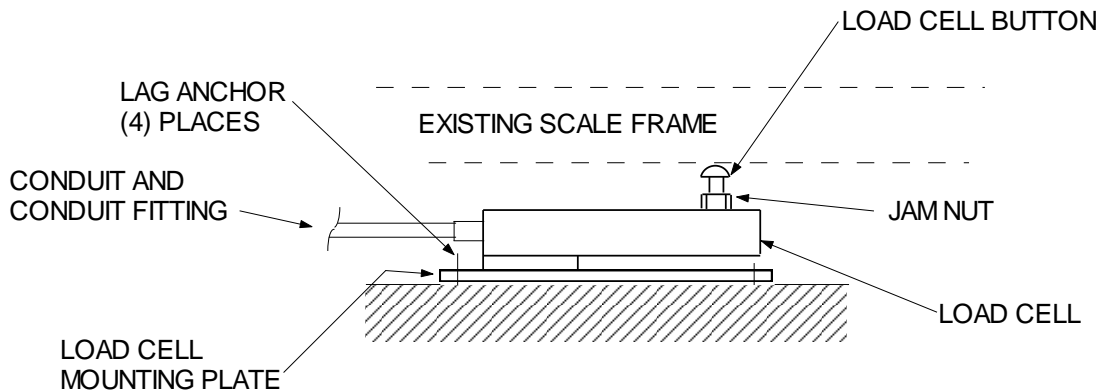
The Model 3050™ Ton Cylinder Scale Conversion Kit is designed to provide accurate weighing of single or dual one-ton cylinders. The strain gauge load cell system provides ease of locating the digital indicator in a remote location. The load cell is equipped with an adjustable leveling button.

Base Anchoring, Installation & Wiring:

Step 1: Installing the load cell: Place load cell mounting plate on floor and position it so that the load cell button is making contact with the existing scale base in the same location as the old cell.

Step 2: Mark the (4) holes in the mounting plate and drill and anchor the unit to the floor with lag anchors.

Step 3: Adjust load cell button and nut until scale frame is level. Tighten jam nut. **This leveling adjustment is critical to accurate operation of the load cell.**



Step 4: Run conduit either to a junction box, or directly to the digital controller. This will be determined by individual installation conditions.

Step 5: If a junction box is used, mount it to the wall and make proper wiring connections.

Wire Color Code:

- Green = + Signal
- White = - Signal
- Black = - Supply Voltage
- Red = + Supply Voltage
- Violet = Shield

*****See controller manual for rest of set-up and operating instructions.*****

Replacement Parts:

PN: **SB/SS-4K-LC** – 4K replacement load cell & shim (for Model 3050-1)

PN: **SB/SS-5K-LC** – 5K replacement load cell & shim (for Model 3050-2)

PN: **3050LCB** – Load cell button w/ jam nut