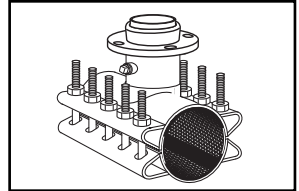


SUBMITTAL INFORMATION

Stainless Steel Tapping Sleeve 30" - 36" - (FTSS-xxxx-xx-MJ style)



*TAPPING SLEEVE WITH STAINLESS STEEL OR CARBON STEEL FLANGE WITH MECHANICAL JOINT OUTLET

MJ Adapter Outlet -
Compatible with AWWA C111
Mechanical Joint Fittings

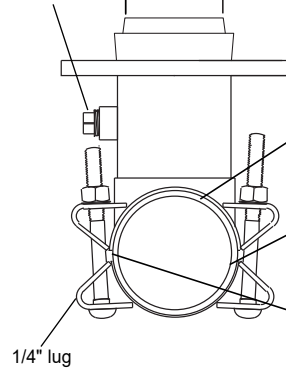
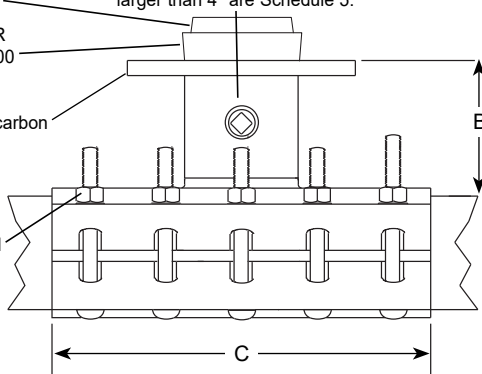
Outlet Pipe - Type 304 stainless steel.
Schedule 10 for 3" & 4" outlets. Outlets
larger than 4" are Schedule 5.

3/4-14 No-Lead
Brass Test Plug

Connecting Gasket - NBR
(Buna-N) per ASTM D2000

Support Ring - Type 304
stainless steel. Optional carbon
steel available

Bolts, Nuts, & Washers -
Type 304 stainless
steel per ASTM A193 and
A194. Heavy hex nuts
and washers are coated
to prevent galling and
maximize bolt efficiency.



Outlet Gasket - Virgin NBR (Buna-N)
compounded for water service per
ASTM D2000. Outlet gasket ensures
complete seal of outlet area.

Full Gasket - Gridded virgin SBR
compounded for water service, per
ASTM D2000. Full gasket gives 360°
pipe coverage.

Armors - Hardened heavy gauge
stainless steel are vulcanized to
gasket and recessed to bridge the gap
between lugs.

NOMINAL PIPE SIZE	SLEEVE O.D. RANGE (IN.)	By	OUTLET SIZE CODE	NOMINAL DIMENSIONS - INCHES			No. OF BOLTS	APPROX. WT. LBS.	CATALOG NUMBER	✓ SUBMITTED ITEM(S)
				A	B	C				
30"	29.60-30.00 29.80-30.20 30.40-30.80 31.74-32.22 32.40-32.80 32.70-33.10 33.20-33.60	X	3	3-1/4	5-3/16	16	6	171	FTSS-3000-xx-MJ FTSS-3020-xx-MJ FTSS-3080-xx-MJ FTSS-3222-xx-MJ FTSS-3280-xx-MJ FTSS-3310-xx-MJ FTSS-3360-xx-MJ	
			4	4-1/4	5-3/16	16	6	172		
			6	6-13/32	5-1/2	16	6	180		
			8	8-13/32	5-5/8	16	8	190		
			10	10-27/64	6-1/8	20	10	238		
			12	12-27/64	6-1/4	24	12	325		
			14	14	6-3/8	24	16	380		
			16	16	6-3/8	32	16	470		
			18	18	6-3/8	36	18	560		
			20	20	6-3/8	40	20	630		
36"	34.70-35.10 35.80-36.20 36.20-36.60 37.90-38.30 38.30-38.70 38.70-39.10	X	24	24	6-3/8	48	24	790	FTSS-3510-xx-MJ FTSS-3620-xx-MJ FTSS-3660-xx-MJ FTSS-3830-xx-MJ FTSS-3870-xx-MJ FTSS-3910-xx-MJ	
			3	3-1/4	5-3/16	16	6	188		
			4	4-1/4	5-3/16	16	6	190		
			6	6-13/32	5-1/2	16	6	215		
			8	8-13/32	5-5/8	16	8	220		
			10	10-27/64	6-1/8	20	10	260		
			12	12-27/64	6-1/4	24	12	340		
			14	14	6-3/8	24	16	480		
			16	16	6-3/8	32	16	525		
			18	18	6-3/8	36	18	600		
20	20	6-3/8	40	20	705					
			24	24	6-3/8	48	24	875		

* The complete FTSS catalog number for a 30" pipe (32.00 O.D.) with a 12" stainless steel outlet is FTSS-3222-12-MJ. For a carbon steel outlet, add "A" to the catalog number. Example: FTSS-3222-12A-MJ.

Note: A 1" undersize cutter is required for outlets 14" and larger. Oversize outlets are available by special request.

FEATURES

- Body, straps and UNC threaded bolts are made of type 304 stainless steel. Support ring can be either type 304 stainless steel or ASTM A36 carbon steel. All welds are fully passivated for corrosion resistance
- Outlet gasket is NBR (Buna-N) per ASTM D2000
- Other sizes and ranges available. Contact your Ford Meter Box® representative for details
- Removable bolts provide better accessibility
- Certified to ANSI/NSF Standard 61

The Ford Meter Box Company considers the information in this submittal form to be correct at the time of publication. Item and option availability, including specifications, are subject to change without notice. Please verify that your product information is current. Our standard warranty applies.



The Ford Meter Box Company, Inc.
P.O. Box 443, Wabash, Indiana U.S.A. 46992-0443
Phone: 260-563-3171 / Fax: 800-826-3487
Overseas Fax: 260-563-0167
www.fordmeterbox.com

08/21/20

Submitted By:



36 Hudson Rd
Sudbury MA 01776



800-225-4616
www.tisales.com