

Be Confident with Sustained Accuracy Over Time

Neptune® MACH 10® Ultrasonic Meter



The MACH 10® ultrasonic water meter features solid state metrology with no degradation of accuracy over time. Combined with a corrosion-resistant, lead free, high-copper alloy maincase, the MACH 10 is built to withstand demanding service conditions and deliver sustained accuracy over the life of the meter.

- Sizes $\frac{5}{8}$ ", $\frac{3}{4}$ ", and 1"
- Extended low-flow range for superior leak detection
- Accuracy sustained over meter life
- Can be installed in both horizontal and vertical applications
- Advanced ultrasonic technology
- Lead free, high-copper alloy maincase
- Certified to UL 327B ($\frac{3}{4}$ ", 1") for residential fire service applications
- No maintenance



36 Hudson Rd
Sudbury MA 01776



800-225-4616
www.tisales.com



NEPTUNE
TECHNOLOGY GROUP

#winyourday

Specifications

AWWA C715 Compliant

NSF/ANSI 61 Certified

UL327B Certified

(Optional on ¾", 1")

Application

- Cold water measurement of flow in residential potable, combination potable and fire service, and reclaim/secondary water applications.

Maximum Operating Water Pressure

- 175 psi

Operating Water Temperature Range

- +33°F to +122°F (+0.5°C to +50°C)

Environmental Conditions

- Operating temperature:
+14°F to +149°F (-10°C to +65°C)
- Storage temperature:
-40°F to +158°F (-40°C to +70°C)

Options

Sizes

- ⅝", ⅝" x ¾"
- ¾", ¾" x 1"
- 1", 1" x 1¼"

Meter Options

- Potable water
- Reclaim water
- Residential fire service (combo or standalone meter service lines)

Warranty

- Neptune provides a limited warranty for performance, materials, and workmanship. See warranty statement for details.

System Compatibility

- Compatible with all Neptune endpoints. Also available as MACH 10®)R900i™ for an integrated radio solution and MACH 10®)TC for Sensus Touch Coupler compatibility.

Ti SALES

36 Hudson Rd
Sudbury MA 01776



800-225-4616
www.tisales.com

Operating Characteristics

Meter Size	Normal Operating Range @ 100% Accuracy (+/- 1.5%)	AWWA C715 Standard Type 1	Extended Low Flow @ 100% Accuracy (+/- 3%)
⅝"	0.10 to 25 U.S. gpm 0.02 to 5.68 m³/h	0.2 to 20 U.S. gpm 0.05 to 4.54 m³/h	0.05 U.S. gpm 0.01 m³/h
¾"	0.10 to 35 U.S. gpm 0.02 to 7.95 m³/h	0.5 to 30 U.S. gpm 0.11 to 6.81 m³/h	0.05 U.S. gpm 0.01 m³/h
1"	0.40 to 55 U.S. gpm 0.09 to 12.49 m³/h	0.75 to 50 U.S. gpm 0.17 to 11.35 m³/h	0.25 U.S. gpm 0.06 m³/h

Available Units of Measure

Consumption	Rate
Gallons	GPM
Cubic Feet	GPM
Cubic Metres	LPM
Cubic Meters (International)	LPM
Imperial Gallons	GPM
Acre-Feet*	GPM
Litres*	LPM
Kilolitres*	LPM

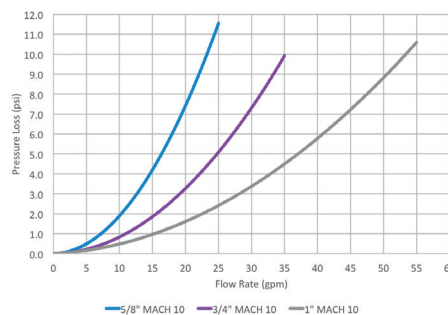
*Unit cannot be displayed on LCD

Dimensions

Meter Size	Length	Height	Threads (NPSM)
⅝"	7½"	3⅜"	¾" - 14"
⅝" x ¾"	7½"	3⅜"	1" - 11½"
¾"	9"	3⅜"	1" - 11½"
¾" SL	7½"	3⅜"	1" - 11½"
¾" x 1"	9"	3⅜"	1¼" - 11½"
1"	10¾"	3⅜"	1¼" - 11½"
1" x 1¼"	10¾"	3⅜"	1½" - 11½"

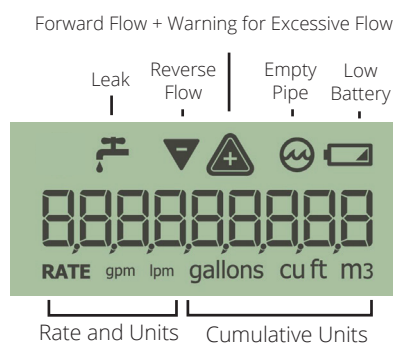
Pressure Loss

This chart shows typical meter performance. Individual results may vary.



LCD Display

9-digit display for extra resolution on manual reads.



Registration

High Resolution (8-digit reading)	
0.1	U.S. Gallons
0.1	Imperial Gallons
0.01	Cubic Feet
0.001	Cubic Metres



Residential Fire Service Meter



neptunetg.com

Neptune Technology Group

1600 Alabama Highway 229
Tallahassee, AL 36078
800-633-8754 f 334-283-7293