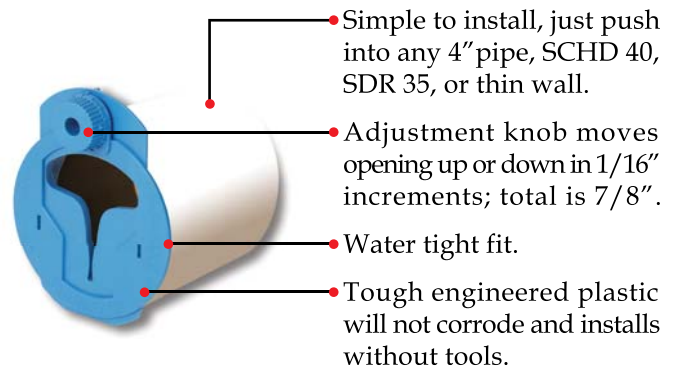
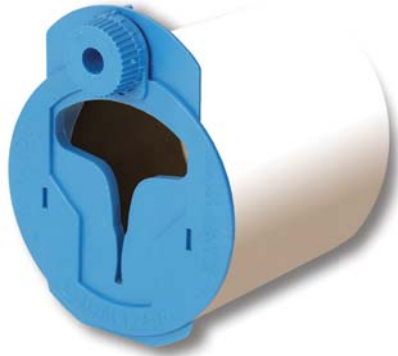


Equalizer



The Equalizer's patented weir opening maintains equal flow, even in unlevel D-Boxes that continue to move their entire lives.

Equalizer Features:

- Maintains equal flow from distribution box.
- Automatically compensates for box movement.
- Engineered plastic is non-corrosive.
- Extends septic system life.
- Inserts without tools.
- Resets equal flow when D-Box has moved.

PATENTS: U.S.A. - 5,680,989 - 5,154,353 - 5,107,892



Custom Distribution Boxes with Equalizers installed

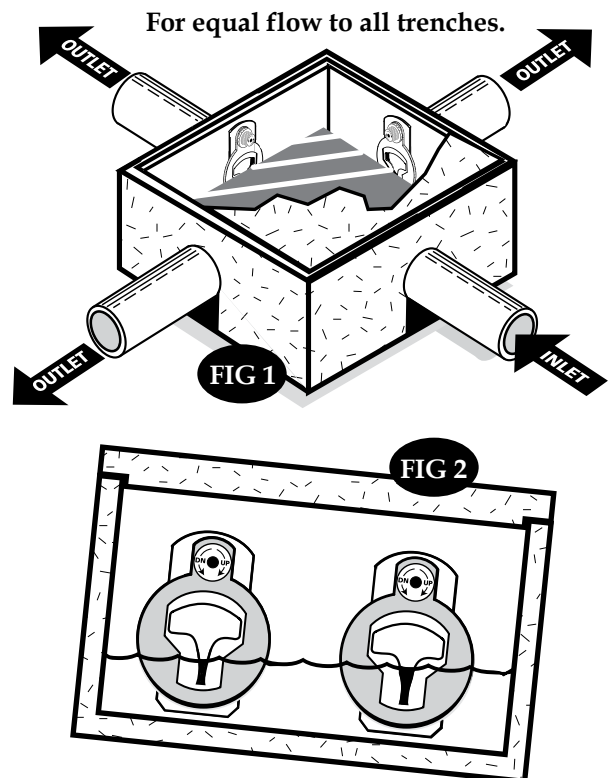
Equalizer Adjustment Instructions

Adjustment Instructions - Easy as 1-2-3

1. Insert one Equalizer unit into each D-Box outlet pipe as in Fig 1 with the adjustment knob positioned on top.
2. Rotate all adjustment knobs counter-clockwise to the full DOWN position.
3. Add water into the D-Box until reaching the weir openings of the Equalizers as shown in Fig 2. Using the water as a level, observe which outlet sits highest in the D-Box and do not adjust the Equalizer fitted to that outlet. Rotate all remaining Equalizer knobs clockwise, moving the weir plate UP to match the level of the highest Equalizer. Fine tune by slowly adding water to make sure all weir opening outlets are at the same level.

CAUTION:

If a D-Box is out of level more than 3/8" (6 Clicks), relevel the box and start again.



Ti SALES

36 Hudson Rd
Sudbury MA 01776



800-225-4616
www.tisales.com