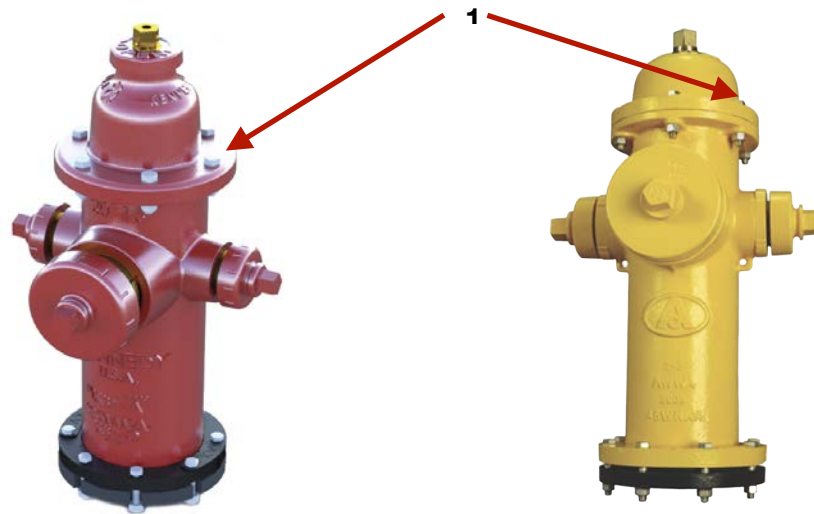


ALFX Sensor Installation Guide

Physical Installation

Step 1: Select the Bolt Location

Determine the best bolt location for the ALFX Sensor which is typically not the bolt directly facing the street but the next bolt to the right (1) facing the direction of oncoming traffic.



Step 2: Remove the Hydrant Bolt and Nut

Remove the hydrant bolt and nut. Save these for future use if necessary. You will not need the nut for installation of the ALFX Sensor which has it's own supplied stainless steel nut.

Step 3: Replace Bolt with ALFX Sensor

Remove the hydrant bolt and insert the post of the ALFX Sensor. Ensure that the housing screw to the right of the label faces the street, in the direction of approaching vehicles.



Step 4: Hand Tighten the ALFX Sensor to the Hydrant

Using the stainless steel 5/8"-11 or 1/2"-13 nut supplied with the ALFX Sensor, hand tighten the sensor to the hydrant. You can hold the polycarbonate housing with your hand while you are hand-tightening the nut. Never hold the housing with a tool.

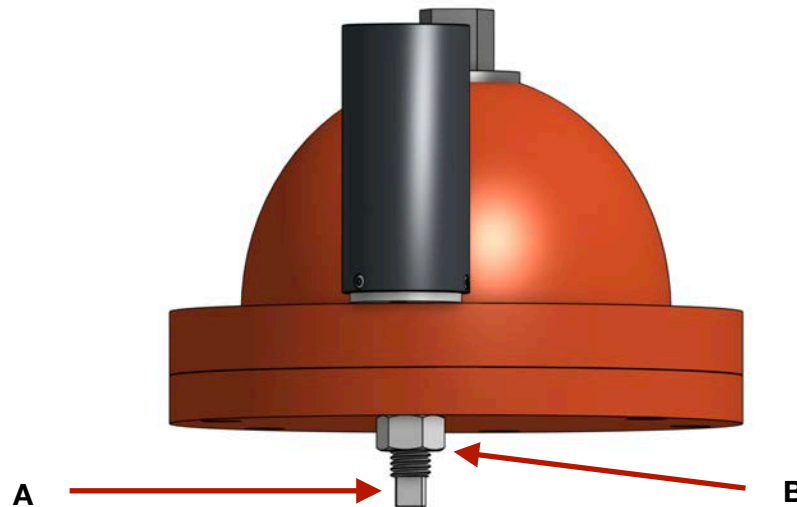
Step 5: Tighten the ALFX Sensor to the Hydrant Using a Torque Wrench

The ALFX Sensor must be torqued to the correct ft-lb for the proper operation of both hydrant and sensor. The recommended torque value is:

1/2"-13 stainless steel nut: 35 ft-lb or the hydrant manufacturer's recommended value

5/8"-11 stainless steel nut: 35 ft-lb or the hydrant manufacturer's recommended value

**** THE TORQUE VALUE MUST NOT EXCEED 80 FT-LB ****



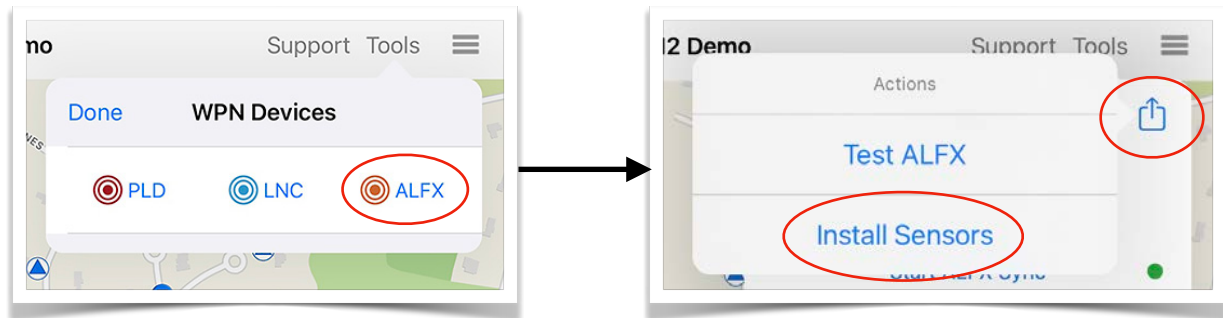
- A. When tightening the ALFX Sensor to the hydrant, grip the flat end of the post (A) with the pliers wrench, making sure the label on the ALFX Sensor remains in the same position as in Step 4 above. This is the ONLY way to grip the ALFX Sensor when tightening it to the hydrant. **Never hold the polycarbonate body or any part of the ALFX Sensor above the hydrant flange when torquing the nut.**
- B. While gripping the flat end of the post (A), as described above, use a torque wrench with the appropriate crow foot attachment, sized for the stainless steel nut (B). Set the torque to the appropriate amount for the size of the stainless steel nut.

Note: To uninstall an ALFX Sensor, follow the same approach used when installing the sensor - grip the flat end of the post with the pliers wrench and use the crow foot torque wrench to loosen the nut. Replace the original hydrant flange bolt and torque its nut to the hydrant manufacturer's specification.

Software Installation

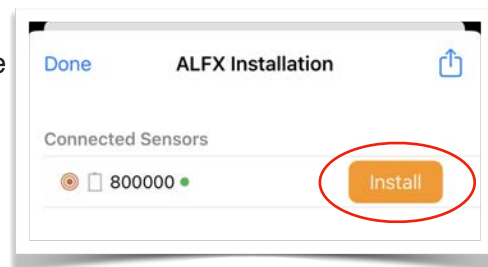
Navigate to Install Sensors in the WPN2 iOS App

1. Log into the Utility's account in the WaterPoint Network (WPN2) app.
2. In the Map view, tap **Tools**, then tap **ALFX**.
3. In the ALFX view, tap the Action button (top right corner). Then, tap **Install Sensors**.



Installing

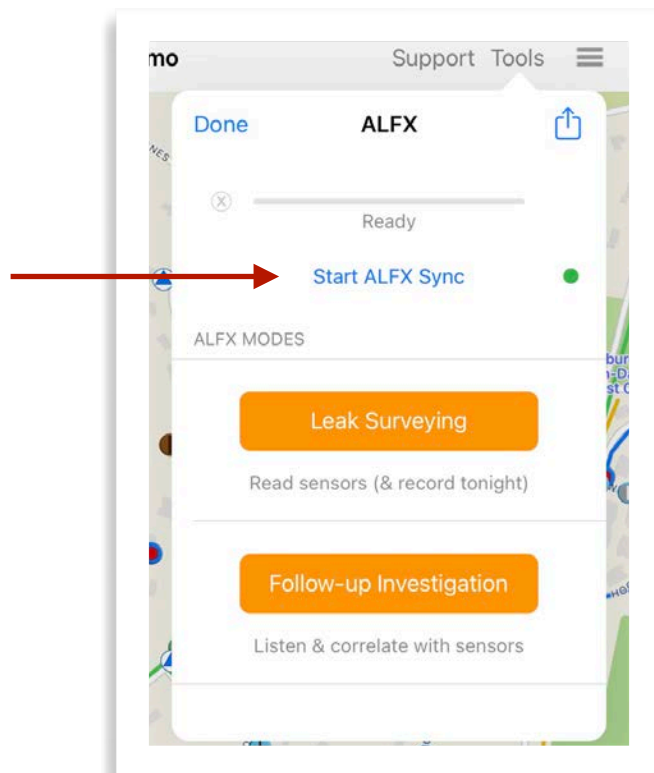
1. Sensors are turned off when they ship from the factory.
2. Touch the silver target on the ALFX Sensor with the magnet to turn on its radio.
3. On radio connection, the sensor will appear under "Connected Sensors" and you will hear an audio cue (a two-tone sound).
4. Standing next to the sensor, tap the **Install** button:
 - Sets the sensor's time and location
 - Adds the sensor to the WPN2 database and enables surveying for this sensor
 - Associates the sensor with its fire hydrant (requires an active internet connection, either via a cellular capability or a Wi-Fi hotspot)
5. Take a photo of the newly installed ALFX sensor:
 - Tap the Info icon next to the sensor in the Installed Sensors view.
 - Tap the Action button in the top right corner to access the iOS device's camera.
 - Take the photo and tap Use Photo. The photo will be associated with the ALFX Sensor.







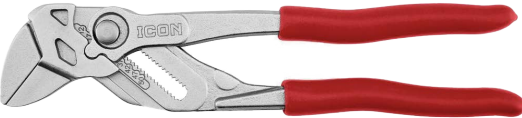
Cloud Syncing

After installing sensors, in the ALFX main view, tap **Start ALFX Sync** to sync the installations with the ALFX Cloud.

If the dot to the right of **Start ALFX Sync** is green, then you are online and able to sync. If it is yellow and **Start ALFX Sync** is grayed out, it means the WPN2 app is offline and you cannot sync now. The sensor installations have been saved, so you will be able to sync later, when you have a strong Wi-Fi or cellular signal.



Items Needed for Installation

ALFX Sensor with permanently attached Post - 5/8" or 1/2"	
ALFX Stainless Steel Nut - 5/8" or 1/2" (supplied with the ALFX Sensor)	
Torque Wrench †	
Crow Foot Wrench - 15/16" or 3/4" †	
Pliers Wrench - 10" †	

† These tools are available for purchase from 64seconds.