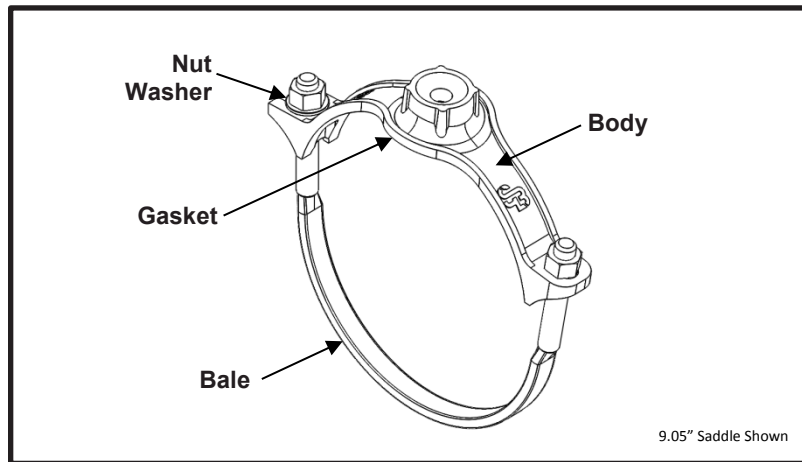


SPECIFICATION

SERVICE SADDLE SINGLE BALE

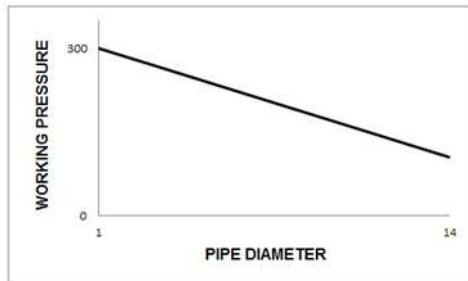
MODEL 311



APPLICATIONS

- **Typical Uses**
 - Tapping branch connections on new or existing pipe
 - Installing air/vacuum valves, pitot tubes, drain valves, or other miscellaneous service equipment
 - Installing pipe supports, hangers, or sign mounting brackets
- **Standard Pipe Sizes**
 - 1" to 14" nominal
- **Standard Taps**
 - NPT: 1/2", 3/4", 1", 1-1/4", 1-1/2" and 2"
 - CC/AWWA: 1/2", 5/8", 3/4", 1", 1-1/4", 1-1/2"
 - BSP: 1/2", 3/4", 1", 1-1/4", 1-1/2", 2"

See Smith-Blair catalog for available pipe diameter and tap size combinations as some combinations are not available
- **Type of Pipe**
 - Carbon Steel, Stainless Steel, Ductile Iron, Asbestos Cement, Aluminum
- **Working Pressure**
 - Up to 200 psi depending on type of pipe, type of repair, pipe diameter, service conditions, and installation workmanship





SPECIFICATION

SERVICE SADDLE SINGLE BALE

MODEL 311

MATERIALS

- **Body**
 - Cast using Ductile Iron 65-45-12 per ASTM A536
 - Flexi-Coat® fusion bonded epoxy finish which meets application methods AWWA C213
 - Closed ear holds nut and bale in place allowing the assembly to hinge for ease of installation around pipe
 - Open ear provides easy slip on installation and removal of nuts are not required preventing lost hardware
 - Canted ears for maximum tangential tightening of bale
 - Wraparound design provides maximum pipe support, reinforcement, and sealing pressure
 - Wide skirt with heavy tapping boss provides excellent stability on the pipe
 - Single bale allows for quick installation
- **Bale**
 - HSLA Carbon Steel per AWWA C111/A21.11
 - Fe/Zn coated per ASTM F1941-10
 - Size: 1" – 3" nominal pipe size = 1/2"-13UNC
 4" – 14" nominal pipe size = 5/8"-11UNC
 - Pipe contact surface flattened to provide a wider bearing surface against pipe
- **Gasket**
 - Nitrile (Buna-N) per ASTM D2000
 - Certified to NSF/ANSI 61-G & 372
 - Compounded to resist water, oil, natural gas, acids, alkalies, most (aliphatic) hydrocarbon fluids, and many other chemicals
 - Temperature range: -20°F to +180°F
 - TaperSeal™ hydro-mechanical lip enables the saddle to hold higher pressures with minimal nut torque
 - Gasket is fully cemented in a cavity to hold it in place
- **Nuts**
 - Carbon Steel per ASTM A307
 - Fe/Zn coated per ASTM F1941-10
 - Size: 1" – 3" nominal pipe size = 1/2"-13UNC Heavy Hex Semi-Finished
 4" – 14" nominal pipe size = 5/8"-11UNC Heavy Hex Semi-Finished
- **Washer**
 - Carbon Steel per ASTM F844
 - Fe/Zn coated per ASTM F1941-10
 - Size: 1" – 3" nominal pipe size = 1/2" Type A Plain
 4" – 14" nominal pipe size = 5/8" Type A Plain
 - Utilized to preserve corrosion resistance of epoxy coated surfaces and increase bearing surface



36 Hudson Rd
Sudbury MA 01776



800-225-4616
www.tisales.com



SPECIFICATION

SERVICE SADDLE SINGLE BALE

MODEL 311

LISTINGS

- Certified to NSF/ANSI 61-G & 372
- Meets applicable AWWA C800 standards

OPTIONS

- Type 304 Stainless Steel bale with fluoropolymer coated Type 304 Stainless Steel nuts to prevent galling
- Alternative gasket material (e.g. Viton, EPDM, etc.)
- Anode connector

NOTES

- These product specifications were correct at the time of publication and are subject to change without notice
- Flexi-Coat® is a registered trademark of Smith-Blair, Inc.
- Taperseal™ is a trademark of Smith-Blair, Inc.
- See the Smith-Blair® web site for part numbers and ordering information
- See the Smith-Blair® web site for warranty information
- See the Smith-Blair® web site for corrosion warnings

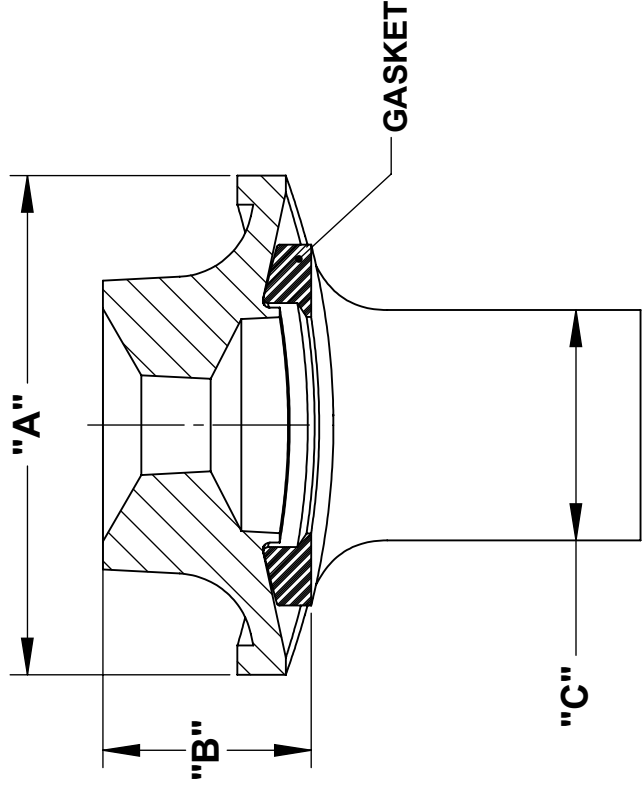


36 Hudson Rd
Sudbury MA 01776

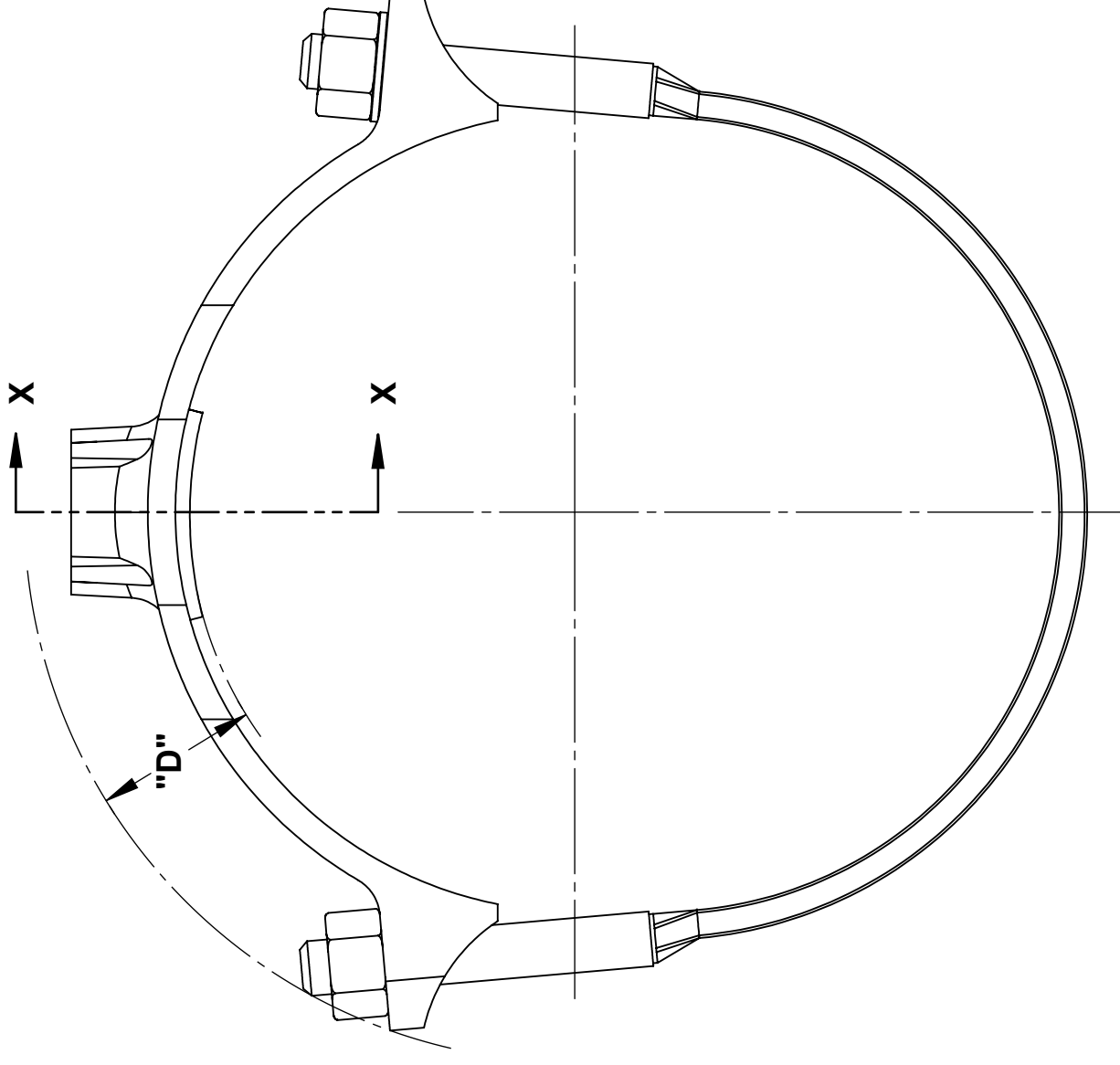


800-225-4616
www.tisales.com

30 Globe Ave, Texarkana, AR 71854
Ph: 870-773-5127 • Fax: 870-773-5212
Toll-Free Numbers: Ph: 800-643-9705 • Fax: 800-648-6792



SECTION X-X



NOMINAL SIZE	APPROX. WT. (LB)	TAP CODE	A	B	C	D	SOCKET SIZE
1.00 - 1.50	1	ST	3.35	1.40	1.25	1.55	7/8"
	-	LT	-	-	-	-	
2	2	ST	3.65	1.66	2.70	1.75	7/8"
	2	LT	3.95	1.40	1.25	1.65	
2.25 - 2.50	2	ST	3.40				7/8"
	3	LT	3.90	1.45	1.30	1.50	
3	2	ST	3.40				7/8"
	3	LT	3.85				
4	3	ST	3.45				7/8"
	4	LT	4.85				
5	3	ST	3.45				7/8"
	5	LT	4.45	1.50	1.70	1.80	
6	5	ST	3.40				7/8"
	6	LT	4.40				
8	5	ST	3.40				1-1/16"
	6	LT	4.40				
10	5	ST	3.40				1-1/16"
	6	LT	4.40	1.40	1.70	1.90	
12	5	ST	3.40				1-1/16"
	6	LT	4.40				
14	7	ST	3.40				1-1/16"
	7	LT	4.40				

NOTES:

- SEE SMITH-BLAIR CATALOG FOR AVAILABLE PIPE DIAMETER AND TAP SIZE COMBINATIONS AS SOME COMBINATIONS ARE NOT AVAILABLE
- 9.05" SADDLE SHOWN OTHER SIZES SIMILAR
- ABREVIATIONS:
ST = SMALL TAP SIZES 1/2" THRU 1"
LT = LARGE TAP SIZES 1-1/4" THRU 2"

CERTIFIED TO NSF/ANSI 61-G & 372

TOLERANCES U.N.O. XX= ±.03 XXX= ±.015 FRACTIONS= ±.1 ANGLES= ±1° MACH. FIN=	NOTES: REMOVE BURRS AND SHARP EDGES DO NOT SCALE DWG.	APP'D	DATE
SCALE: N/A		CK'D	DATE
ALL DIMENSIONS ARE IN INCHES.		DRN	DATE
		CHD	5/13/15

TITLE

SPECIFICATION
SERVICE SADDLE SINGLE BALE
MODEL 311

SMITH-BLAIR, Inc. TEXARKANA, ARKANSAS	P/N	N/A
	DWG. NO.	SPEC_311.DRW