

ARB® UTILITY MANAGEMENT SYSTEMS™

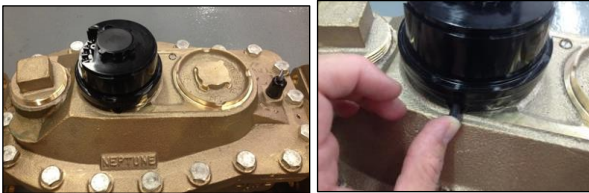


4" TRU/FLO® Retrofit for E-Coder® R900i™ and E-Coder® R450i™ Enhanced Registers (For 4" TRU/FLOs pre August 2014)

Installation Guidelines

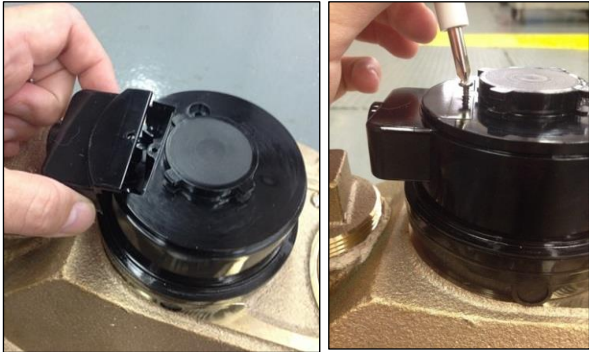
STEP 1

Install the black base onto the meter bayonet. Install the seal pin into the base.



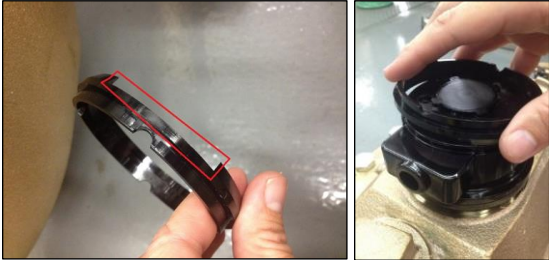
STEP 2

Install the door onto the base. Use the screw to secure the door.



STEP 3

Install the register ring on top of the base. Align the register ring notch so that it fits the base appropriately.



STEP 4

Install the register onto the completed base assembly and insert the final seal pin into the register. Follow normal procedures to install the other register.

