



MODEL 5305™ HYDRAULIC CYLINDER SCALE

- Dependable hydraulic load cell, virtually unaffected by corrosive environments
- Wall mounted read-out dial
- Ideally suited for use in Class 1 thru 3, Div. 1, Group A thru D environments, no electric needed
- Low profile platform design increases safety and ease of cylinder handling
- Standard readability 0.5 lb/kg
- High accuracy of 1% of capacity
- Readout in pounds or kilograms
- Maintenance free UHMW pivot bearings
- Rugged steel construction protected by corrosion resistant finish, solid PVC decking.
- Measures weight of liquefied chlorine, sulfur dioxide, ammonia, hydrogen chloride, carbon dioxide, and other liquefied gases.



The **Model 5305™ Hydraulic Cylinder Scale** provides a means of measuring the weight of liquefied gas under pressure, in order to determine a cylinder's content level. This scale is ideally suited for use in Class 1 thru 3, Division 1, Group A thru D environments because no electric power is used. It is intended for use in chlorination and other gas feeding applications. More specifically, the Model 5305™ can be used to weigh liquefied chlorine, sulfur dioxide, ammonia, hydrogen chloride, or carbon dioxide packaged in cylinders.

For operation, this scale employs a hydraulic loadcell. It offers high accuracy of 1% of capacity. Capacity ranges for each platform are as follows: Gross, 0-300 lbs (0-136 kg).

The Model 5305™ Hydraulic Cylinder Scale has a durable base which is dry powder polyester plastic coated and covered with a PVC deck. The PVC deck provides a buffer

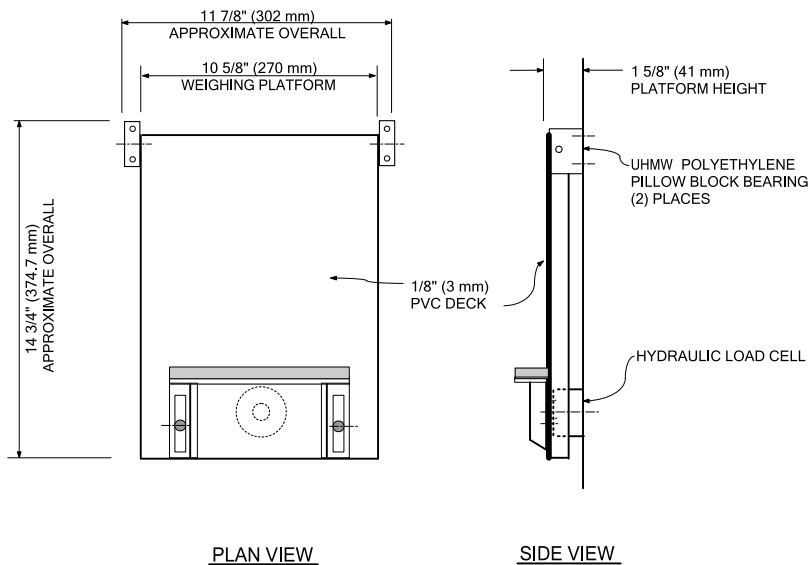
between the metal frame and cylinders to protect the frame from scratches. A rugged PVC backstop positions the cylinder for accurate weighing.

The 1.75" (44 mm) ultra-low profile platform provides added safety and ease of cylinder handling. The 4½" dial indicator is easy to read and provides tare weight adjustment. The indicator may be mounted in any convenient location; 6' of hydraulic hose is provided as standard.

Our UHMW pillow block bearings provide smooth scale operation and accurate readings, and require NO maintenance. Safety chains and sturdy wall bracket are supplied with each scale.

INDICATOR:	4½" Dial Type
PLATFORM HEIGHT:	1.75 inch (44 mm)
ACCURACY:	+/- 1% capacity of full scale
GROSS CAPACITY:	0-300 lbs. (0-136 kg.)
PRODUCT CAPACITY:	0-150 lb. (0-68 kg)
TARE RANGE:	0-150 lb. (0-68 kg)
CYLINDERS SIZE:	10.25 in. to 10.5 in.
SHIPPING WT:	23 lbs. each
PLATFORM SIZE:	10 1/2" x 14 3/4" (266.7mm x 374.7mm)

DIMENSIONS



STANDARD EQUIPMENT

- a. Single scale base
- b. 4½" dial indicator in sealed plastic housing
- c. Adjustable tare
- d. Cross bar and chains to secure cylinder

OPTIONS

- a. Quick Disconnects
- b. Additional length of hydraulic hose
- c. Dual base systems

TYPICAL SPECIFICATIONS



The Hydraulic Cylinder Scale shall be of the hydraulic load cell type designed to weigh 150 lb. (68kg) cylinders. The accuracy must be better than 1.0% of full scale with cylinder centered against backstop. A 4 ½ inch dial with adjustable tare and corrosion resistant sealed plastic housing is required. The base frame shall be dry powder plastic coated with a PVC deck and backstop so cylinder does not come in contact with metal frame. To avoid sag, no solid PVC bases will be acceptable. Bolt-down pillow block pivots shall be made of UHMW polyethylene to eliminate maintenance, friction, and corrosion. The load cell shall contain a preconvoluted rolling diaphragm. Six feet of hydraulic hose will be supplied standard; more available as option.

Scale shall be a Model 5305™ as manufactured by Scaleton Industries Ltd., Plumsteadville, PA.

5 year FULL warranty on ALL products.

Design improvements may be made without notice.