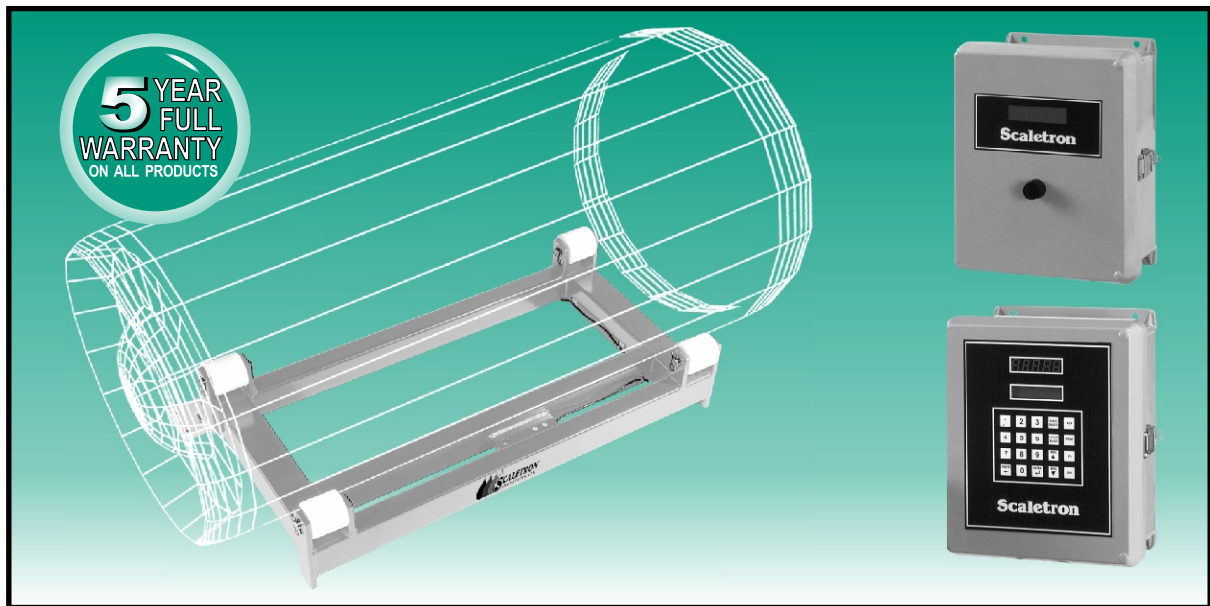




## MODEL 3001™ thru 3006™ DIGITAL TON CYLINDER SCALE



- Solid - state operation by NTEP stainless steel temperature compensated strain gauge transducer
- Electronics housed in NEMA 4x, UL approved enclosure to provide protection from acids
- Low profile design increases safety and ease of cylinder handling
- LED display with easy readability to 1 pound (kilogram)
- High accuracy of  $\pm 0.5\%$  of capacity
- Readout in pounds or kilograms
- Indicator can be remote mounted up to 200 feet (61 meters) away
- Rugged steel construction with corrosion resistant finish
- All moving parts stainless steel construction
- Solid UHMW rollers
- Measures weight of liquefied chlorine, sulfur dioxide, ammonia, hydrogen chloride, carbon dioxide or other liquid or liquefied gas
- Self-locking knob for adjusting tare weight
- 1 - 6 bases can be summed together into one indicator
- Model 1099™ Chemical Process Controller as optional indicator to create The Total Electronic System<sup>SM</sup>

The Model 3001™ thru 3006™ with standard 4½ digit indicator plugs into a wall source and operates on 120 or 240 VAC, 50/60 Hz. As the gas in each cylinder is used, the LED display will continuously indicate the amount of gas remaining. An adjustable, self-locking knob is provided so the operator can pre-set the tare weight. Capacity range for platform is as follows: Gross, 4000 lbs. (1814.4kg); Tare, 2000 lbs. (907.2 kg); and Product, 2000 lbs. (907.2 kg).

For operation, the scale employs a NTEP stainless steel temperature compensated strain gauge transducer. It offers high accuracy of  $\pm 0.5\%$ . The Model 3001™ thru 3006™ has sturdy three-point suspension and is built ruggedly for use

in harsh environments. Construction is all steel, coated with a tough, caution yellow, dry powder polyester plastic finish to protect it from corrosion. Display electronics are housed in a NEMA 4x, UL approved enclosure.

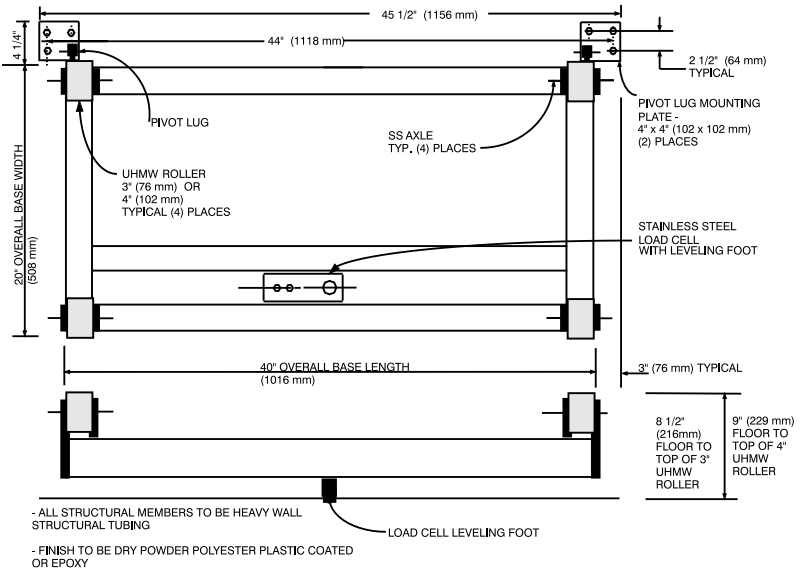
The Model 1099™ Chemical Process Controller is also available on this base, which allows the user to combine different bases to create a customized Total Electronic System<sup>SM</sup>. Please contact the factory for literature on the Model 1099™ Chemical Process Controller.

All of our indicators can be calibrated in pounds or kilograms.

**SCALETRON™ SETS THE STANDARD IN CORROSION RESISTANCE™**

INDICATOR:	4-1/2 Digit	Model 1099™
POWER:	120 VAC, 50/60 Hz, 0.3 A 240 VAC, 50/60 Hz, .15 A	85 VAC to 265 VAC
PLATFORM HEIGHT:	8-1/2 inch high (216 mm) from floor to top of 3 inch UHMW roller 9 inch high (229 mm) from floor to top of 4 inch UHMW roller	
ACCURACY:	0.5% of full scale	0.1% to .25% of full scale
GROSS CAPACITY:	4000 lb. (1814.4 kg) for each ton platform	
RESOLUTION:	0.1 lb. (kg) to full scale capacity	
4-20 mA:	Standard (scale or loop powered)	Standard on Channel 1, (optional for Channels 2-4) Loop Powered
LEVEL INDICATING/ RELAY CONTACTS:	Two Low Level REED Relay contact(s)	Optional - Up to 4 (as High, Low or Control) available on one channel, or more than one per channel for a total of 4 set points with Relay contact
ENCLOSURE:	NEMA 4x, UL Approved enclosure	
SHIPPING WT:	110 lbs.	110 lbs.
PLATFORM SIZE:	45-1/2 inches (1156mm) length (greatest length), 24-1/4 inches (508mm) wide (greatest width)	

DIMENSIONS



STANDARD EQUIPMENT

- Scale base
- Electronic indicator housed in NEMA 4x, UL approved enclosure
- NTEP stainless steel temperature compensated strain gauge transducer
- Self-locking tare adjustment knob
- Trunnions with UHMW polyethylene rollers on stainless steel axles for ease of turning cylinders
- 4-20 mA output - scale or loop powered
- 2 Low level relay contacts
- Each cylinder has its own load cell
- 20 ft. of 4 conductor wire cable

OPTIONS

- 240 VAC power (4 1/2 digit display)
- Remote mounting of indicator box
- Additional length of 4 conductor wire cable
- Model 1099™ Chemical Process Controller

TYPICAL SPECIFICATIONS



Ton Cylinder Scale must be smaller than the cylinder and tilt up for cleaning and inspection. There must be a provision for securing weigh frame to floor. The profile shall be ultra low so as not to require a pit. There must be means to level the frame built into the scale frame. The load cell must be NTEP approved Stainless Steel shear beam cell with a built-in mechanical overload stop to protect it from damage during rough cylinder loading. The frame must be dry powder polyester plastic coated. The trunnions shall be corrosion proof with UHMW polyethylene rollers, requiring no maintenance or greasing. Axles shall be made of stainless steel.

Scale shall be a Model 3001™ thru 3006™ as manufactured by Scaleton Industries Ltd., Plumsteadville, PA.

STANDARD INDICATOR:

Indicator must be electronic with digital display with characters 0.56 inches high and housed in a NEMA 4X, UL approved enclosure. An output of 4-20mA, 0-20mA, or -8 to +12mA, electable as scale or loop powered to provide versatility to interface with related equipment, must be standard equipment. Indicator comes with two low level relay contacts standard. A knob to set tare weights is required. Indicator must be capable of 0.1 lb or 0.1 kg up to 1000.0 lb or kg. Accuracy is 0.5% of full scale, or better.

OPTIONAL INDICATOR:

Model 1099™ Chemical Process Controller see separate specification.

5 year FULL warranty on ALL products.

Design improvements may be made without notice.

Scaleton Industries, Ltd. TEL: (+1) 215-766-2670 (international)  
 Bedminster Industrial Park TEL: 1-800-257-5911 (USA & Canada)  
 53 Apple Tree Lane FAX: (+1) 215-766-2672  
 P. O. Box 365 Email: info@scaletonscales.com  
 Plumsteadville, PA 18949 Website: www.scaletonscales.com